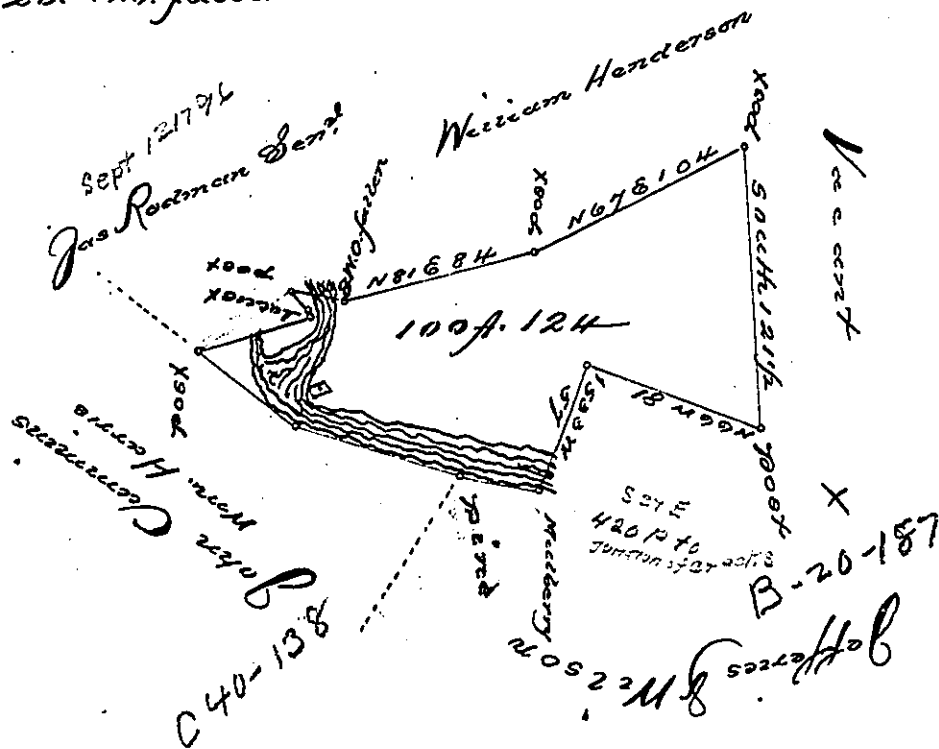


*Courses and distances up Creek from
Meadberry to White Oak fallen*

<i>Courses</i>	<i>distances</i>
N. 75. W.	35. spruce pine
N. 70. W.	75. up Creek
N. 50. W.	52. post
N. 77. E.	51. a locust
N. 9. W.	4. post
N. 38. W.	10. a post
S. 75. E.	20. W. O. fallen



Note. a grist mill

*Draught of one hundred acres and one hundred and twenty four perches
of land with 6 per cent for Roads. Situate in Milford township in Mifflin County
Surveyed on the 12th day of August 1797, in pursuance of a warrant granted to Michael
Morison and William Campbell dated 5th April 1796. as appears by documents
remaining, in my office. Examined 29th February 1808.*

James Harris D. S.

*Samuel Cochran Esquire
Surveyor General of
Pennsylvania*

*IN TESTIMONY that the above is a copy of the original remaining on file in
the Department of Internal Affairs of Pennsylvania, made
conformably to an Act of Assembly approved the 16th day of
February, 1833, I have hereunto set my Hand and caused
the Seal of said Department to be affixed at Harrisburg,
this sixth day of September 1898.*

*James W. Latta
Secretary of Internal Affairs.*